

See in **COLOR, SELF-LEARN** and diagnose **BETTER.**

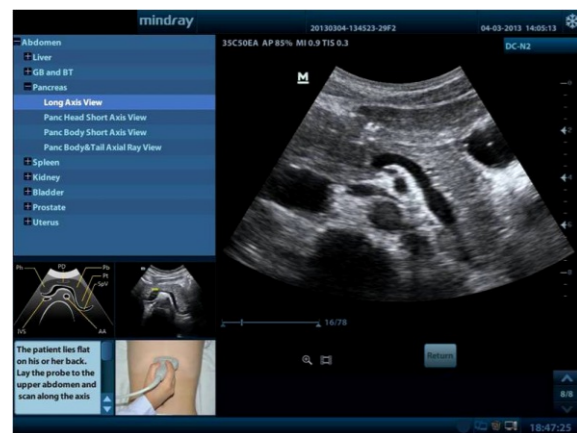
Presenting the New **DC-N2** ultrasound system, with **MORE** features and best-

in-class **VALUE**, you can own one too.



Dedicated Inbuilt Tutorial Software

- Anatomical diagram illustrations including schematic structure tips and coded tissue
- Standard ultrasonogram comparison with real-time scanning
- Scanning reference picture demonstrating adequate patient position and probe placement tips on scanning skills and diagnosis information



Rich clinical technologies

- iClear/iBeam: Reduce image speckle noise and acquire clearer and sharper lesion contours
- PSH: Phase shift harmonic imaging, for better contrast images
- IMT: Automatic detection and calculation of carotid intima-media thickness
- iScape: Real-time panoramic imaging
- Smart 3D: Freehand 3D imaging



CCA Mid IMT



Thyroid iScape



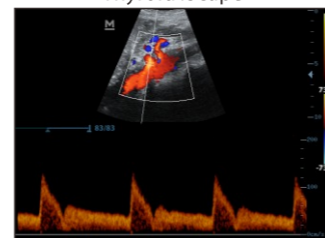
Pancreatic Head & Body



Hepatic Flow



Umbilical Blood Flow



Celiac Axis PW

Powerful workflow

- iTouch: One click quick image optimization
- iZoom: Instant full screen zoom
- iStation: Patient database review and analysis platform
- iStorage: Direct data transfer to PC
- Complete DICOM 3.0 solution

Clinical versatility

- A broad range of transducers with abundant measurement packages for various application fields.
- Compatible with Mindray's B/W ultrasound transducer series.



Ergonomic design

- 15" LCD monitor with 180° rotatable angle
- Height adjustable control panel
- Maximum three transducer connectors
- Two level backlit keyboard for varying requirements
- 1.5h uninterrupted scanning with rechargeable battery